



ELIZABETH SHIELDS  
PARENTHOOD



ELIZABETH SHIELDS  
PARENTHOOD

26TH SEPTEMBER—1ST OCTOBER 2022

THE GALLERY AT GREEN & STONE  
251—253 FULHAM ROAD  
LONDON SW3 6HY  
MONDAY TO SATURDAY: 10.00—17.00

# PARENTHOOD

Parenthood collates three years of work, all centred on the universal subject of family. I attempt to portray the intimacy of the early years through uncompromising and compelling studies of new life, drawing particularly on the apprehensions and fragility of parenting.

Many of the 75 pieces depict small infants asleep. We - as the viewer - are allowed this tender moment when the sleeping child is completely unaware of our presence, cocooned in warmth and safety. Through my work, these intimate studies become enduring images for families to cherish for years to come.

Similarly, each painting of my own family and children has been an opportunity for me to gift the time we spend together, helping me treasure this brief period, encouraging a positive psychological journey and cementing my bond with each. Through this body of work, my intention has been to illustrate the significant importance of the early years in our daily lives by highlighting our shared experiences and the inherent relatability of infancy.

In the self-portraits and the woman-and-child compositions, I attempt to challenge the precedent that reduces a mother's existence simply to her function, instead offering other facets, including displays of maternal trepidation and mental conflict, questioning the nature of responsibility, womanhood and guardianship. In the three self-portraits, I examine feelings of foreboding, eagerness and physical depletion, with the fractured "Pregnancy in Two Parts" playing on these conflicts especially.

The rawness of "Three in a Bed" lays bare the duality of the mother's exhaustion and constancy - a familiar scene to parents - and the exposition of the mother's unique vulnerability is continued in "Breastfeeding in the Garden" and the various bath nudes.

In "Parenthood", I invite the viewer to journey beyond the traditional remit of motherhood, developing conversations around the mother-figure, by capturing familiar moments, both fraught and tender.

My approach to painting centres around my interest in mark-making and colour theory. Artists such as Alice Neel, Chantal Joffe and Susanne du Toit have made a great impression on my work, notably in their compositions and the intention of their mark-making. I have really enjoyed the brushwork and the decisive movement in their work, which is the antithesis of saccharin - an approach rooted in reality, which I find so endearing.

*Elizabeth Shields, 2022*





*BATH WITH BABY. 2021*

Oil on board

59 x 64.5 cm

£900



*UMBILICAL CORD CLAMP. 2022*

Oil on canvas

40 x 45 cm

£945





*WELCOMING LOUIE'S BROTHER, 2021*

Oil on canvas

24 x 14 cm

£585





*WRIGGLING IN THE MIDDLE OF THE BED. 2022*

Oil on cardboard

19 x 10 cm

£450



*IRA SLEEPING WITH HIS HANDS UP. 2021*

Oil on linen board

25.5 x 20.5 cm

£585





*SKETCH OF BEA ON GESSO BOARD. 2019*

Oil on Gesso board

18 x 13 cm

£550



*SUPPORTING GUY. 2021*

Oil on board

20 x 20 cm

£550





*SKIN TO SKIN WITH VEG MUSLIN. 2022*

Oil on board

15 x 15 cm

£560



*CO SLEEPING. 2021*

Oil on panel

25.5 x 25.5 cm

£590





*FIRST REST. 2021*

Oil on panel

20 x 20 cm

£570



*GRANDFATHER'S LOVE. 2022*

Oil on canvas

61 x 45 cm

Not For Sale (£1185 for a similar commission)





*PATERNAL BOND. 2022*

Oil on canvas

99 x 80 cm

£1425



*HANDSTAND. 2022*

Oil on card

10 X 15 cm

£450



*HANDSTAND PRINT. 2022*

Mono print

14 x 21 cm

£390





*BEA ASLEEP WITH BOTTLE. 2021*

Oil on gesso board

13 x 18 cm

£570





*DUCKS.* 2022  
Mono print  
15 x 15 cm  
£390

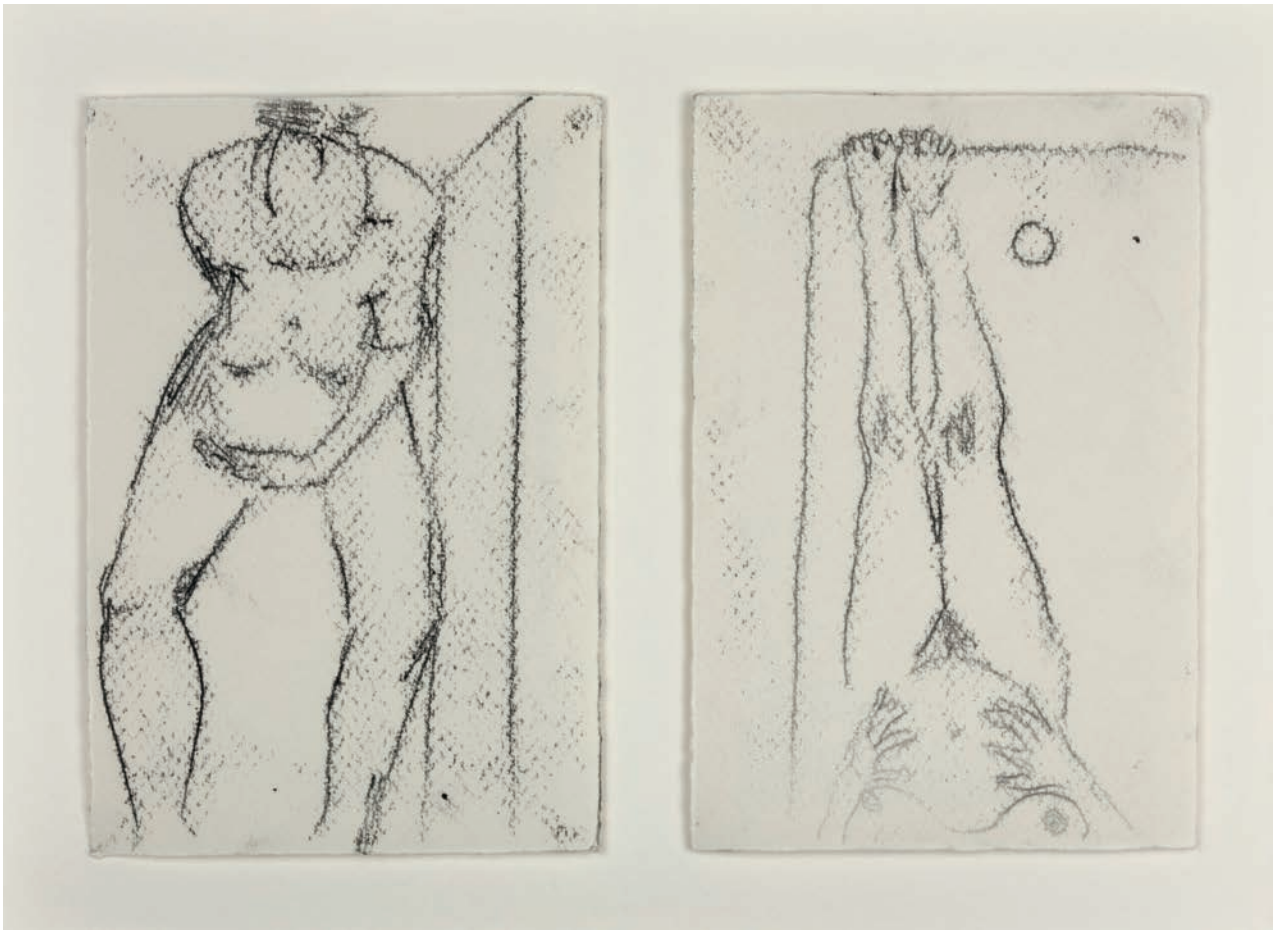


*BATH NUDE. 2022*

Mono print

20.5 x 26 cm

£390



*SELF PORTRAITS DYPTICH. 2022*

Mono print

26 x 34 cm

£430





*BREASTFEEDING IN THE GARDEN. 2022*

Oil on panel

20 x 20 cm

£600



*THREE IN THE BED. 2022*

Oil on canvas

30 x 30 cm

£700





EXHAUSTED. 2022

Oil on linen board

20 x 20 cm

£700





*BABY STEPS.* 2022

Oil on panel

25.5 x 25.5 cm

£585



*FEET DIPTYCH. 2022*

Oil on card

10 x 15 cm each section

£600





*CHUBBY LEGS ON A CHECKED CHAIR, 2021*

Oil on board

30 x 25.5 cm

£570





*BOY SLEEPING WITH SHEEP DOG. 2022*

Oil on card

10 X 15 cm

£450



*HANDS TRIPTYCH. 2022*

Oil on card

15 x 10 cm each section

£650



*TED SWADDLED IN A BLUE BLANKET. 2021*

Oil on board

20 x 20 cm

£570





*SMART TOGS. 2021*  
Oil on linen board  
20 x 20 cm  
£590



*HOLLY + EDMUND. 2019*

Oil on canvas

60.5 x 45 cm

£845





*TAIMOOR READING TO ISSAC. 2021*

Oil on canvas

45 x 30 cm

£890





*EDMUND WITH HANDS TOGETHER. 2022*

Oil on panel

15 x 15 cm

£550



*BOY IN A BLUE STRIPED SHIRT. 2019*

Oil on panel

20 x 20 cm

Not For Sale (£500 for a similar commission)



# COMMISSIONS

Commissioning a portrait is a unique experience, connecting the artist and sitter, creating a piece of artwork to treasure for years to come.

I ask for a number of photographs from which to work. The paintings take me 3-4 weeks depending on lead time. There should then be drying time and framing (if requested) factored in.

Paintings start at £500 for all work under 30x30cm. This can be paid in instalments or in full, on completion. Paintings above 30x30cm are £800-1200 depending on whether there are multiple figures. Framing is an additional cost.



ZANE. 2021  
Oil on panel  
20 x 20 cm  
Not For Sale  
(£500 for a  
similar  
commission)



For the smaller paintings I choose the scale and stretcher, responding to the composition and what I think will work best.

Your child, grandchild, niece, nephew, or godchild's portrait can then be delivered.



*A SISTER FOR  
MINNA. 2021*  
Oil on panel  
15 x 15 cm  
Not For Sale  
(£500 for a  
similar  
commission)

# BIOGRAPHY

Elizabeth Shields obtained her Foundation Diploma at Wimbledon School of Art, a BA in Painting and Printmaking at Glasgow School of Art and the Diploma in Portraiture at Heatherley School of Fine Art. She has exhibited with The Royal Society of British Artists, The Royal Institute of Oil Painters at the Mall Galleries and is included in the Ruth Borchard permanent acquisitions. Elizabeth also sells still life and landscape work through the Lost Gallery, Strathdon.



HELLO@ELIZABETHSHIELDS.COM  
WWW.ELIZABETHSHIELDS.COM  
@ELIZABETHSHIELDSARTIST





THE GALLERY  
G&S

THE GALLERY AT GREEN & STONE,  
251–253 FULHAM ROAD,  
LONDON SW3 6HY.  
+44 (0) 207 352 0837

[WWW.THEGALLERYATGREENANDSTONE.COM](http://WWW.THEGALLERYATGREENANDSTONE.COM)  
[THEGALLERY@GREENANDSTONE.COM](mailto:THEGALLERY@GREENANDSTONE.COM)  
[@THEGALLERYATGREENANDSTONE](https://www.instagram.com/THEGALLERYATGREENANDSTONE)